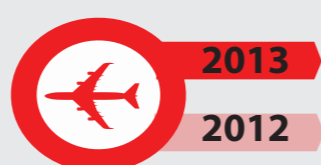




Everybody knows Schiphol Airport. But still it is unknown to the most of us which airports in the Netherlands belong to the Schiphol Group. In this infographic I show which Dutch airports are a part of the Schiphol Group, how many passengers are flying from the airports (Europe & intercontinental), how many pieces of luggage is transported and which kind of transportation passengers in the Netherlands take to go to the airports.

Schiphol Group In The Netherlands



Total passenger flights

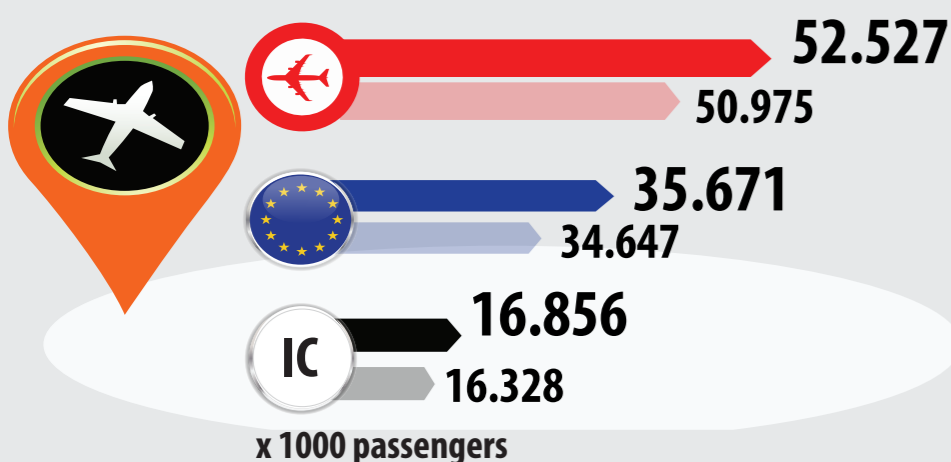


European flights



Intercontinental flights

Schiphol Airport

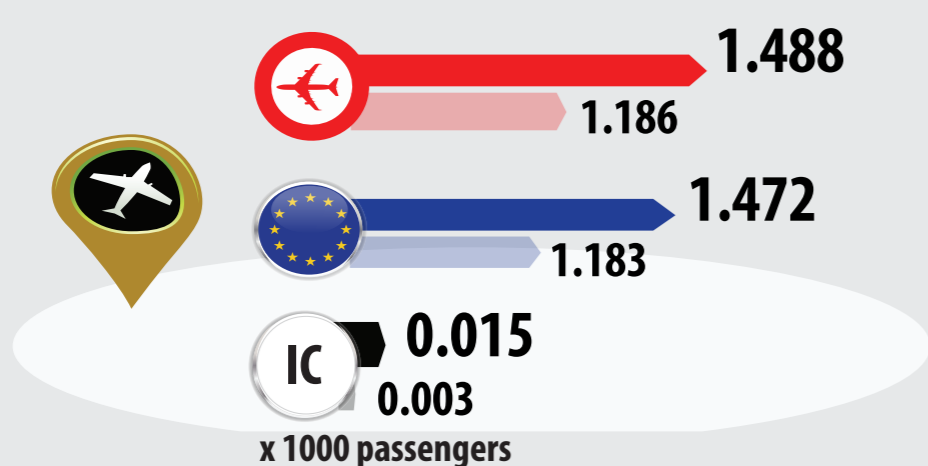


Lelystad Airport

* only used for cargo

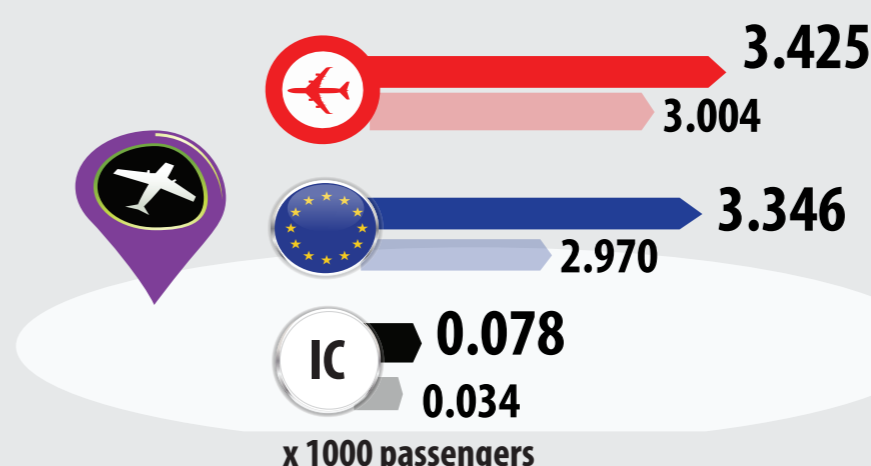


Rotterdam The Hague Airport

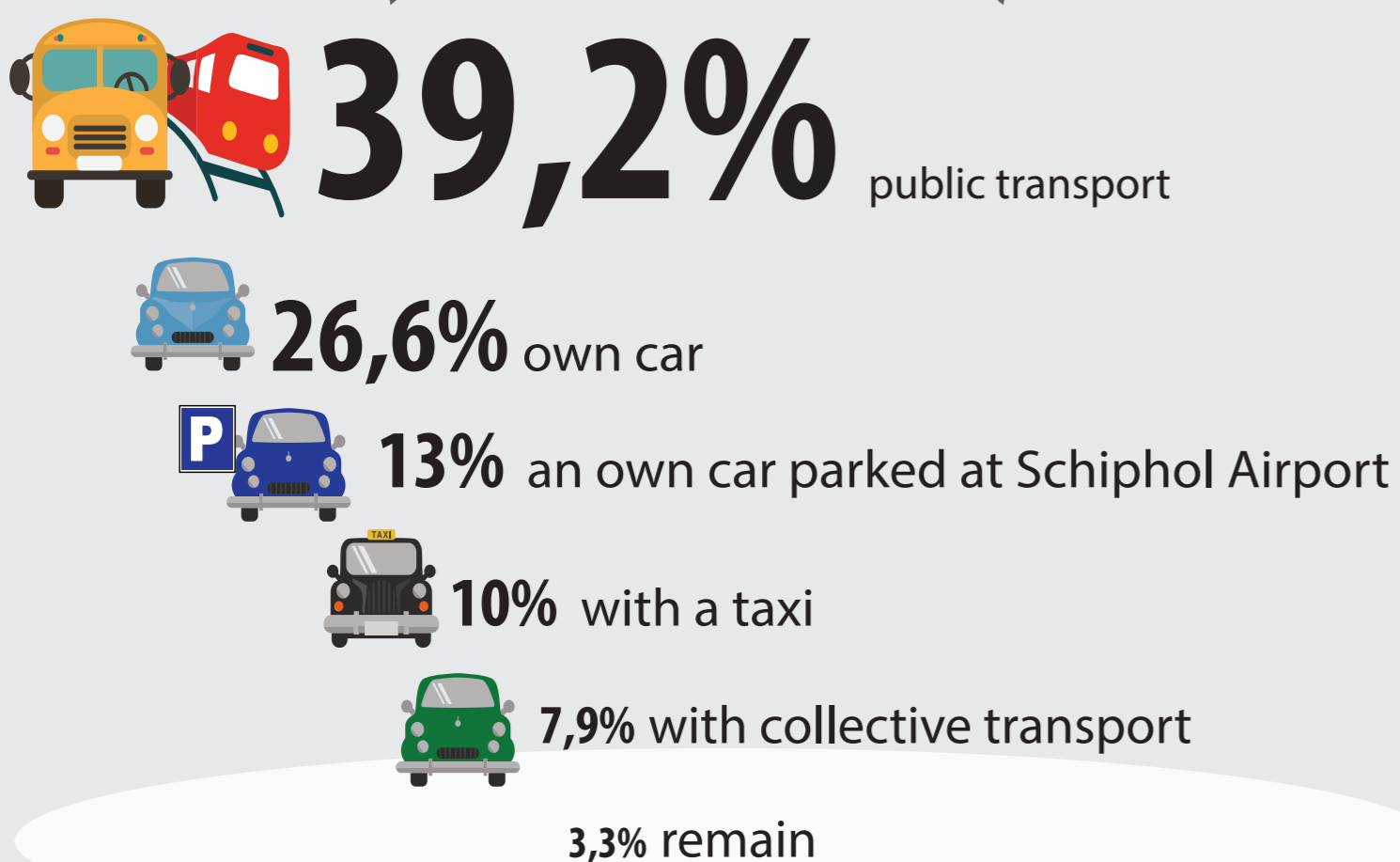


Eindhoven Airport

* 51% stakeholder



Transport to Schiphol Airport



Luggage

60 Thousand

luggage pieces are transported on daily bases in the Schiphol Group in the Netherlands

