

Impact Schiphol

on Dutch Economy

The First World War ended in 1918. The military planes were aimless to use for Schiphol, until Albert Plesman got a super idea: Convert the discarded warplanes for mail, cargo and passengers. How has this change affected and contributed the Dutch economy?

Designed by Bas Heltzel
800565

Interactive Visualisation
Tilburg University

506



Businesses established in Amsterdam Airport Schiphol with net sales of 345 million in 2013

290.000



Jobs created in the Netherlands, approximately 65.000 people are employed at Amsterdam Airport Schiphol

1,5 million tons



freight transport, offering the Netherlands to be an important economic hub in international chains and to distinguish itself

Contribution to Dutch GDP



\$26 billion

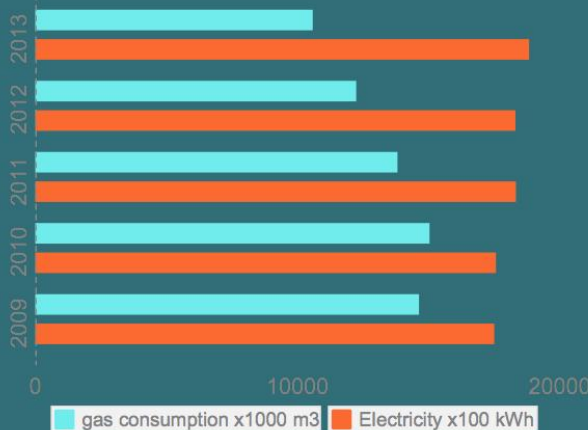


Aviation (46%) Businesses (32%) Tourism (22%)

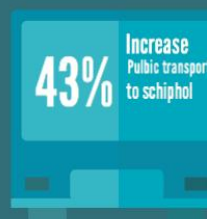
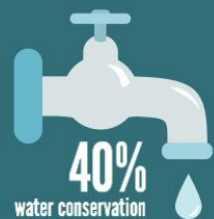


Ecological footprint

Schiphol supports green growth economy



Leed
Platinum
Award



43% Increase
Public transport
to schiphol

40%
water conservation

Sources: Publication schiphol group 2013 and <http://www.schiphol.nl/SchipholGroup> and <http://www.schiphol.nl/B2B/RouteDevelopment/MarketFacts.htm>

powered by